

# DEERING'S HEYENNE HAROLAIS



*25th Annual Ranch-Raised, Rancher-Approved Bull Sale*

## Saturday March 10, 2018

**Philip (SD) Livestock Auction  
Selling 80 Yearling  
& 12 two-year-old Charolais Bulls**



### 2018 FEATURED SIRES

JAB Bullet In The Gun 102P-ET (Wind x Cigar)  
"2012 Grand Champion BHSS"

2TM Revelation 120 (Revelation x Justice)  
"1st Sons Sell - 2013 Grand Champion BHSS"  
New Jr. Herdsire

2H TLC Copperhead 102Y (Wind x Prime Cut)

WDZ Wind 016 (Wind x Cigar)

2TM Unlimited Justice 818P (Justice x Cigar)

Wells Line of Fire

Maximizer 4044

WCR Sir Duke 330

CC Mr Belvedere

- *Unconditional One Year Guarantee on Bull Purchases*
- *5% discount on 5-9 head*
- *10% discount on 10 or more head*
- *Free keep 'til May 1st*
- *Free Delivery*



of Wasta, South Dakota  
Joel Deering cell: 605-381-0885  
Home: 605-993-3151  
Kandi Deering cell: 605-430-6260  
jdiamond1969@yahoo.com

[www.CheyenneCharolais.com](http://www.CheyenneCharolais.com)



Joel Deering • (605) 993-3151 or 381-0885  
17960 Base Line Rd.  
Wasta, SD 57791  
jdiamond1969@yahoo.com  
*(e-mail checked daily)*  
Kandi Deering • (605) 430-6260

**SALE DATE AND TIME:** Saturday, March 10, 2018 – 1PM (MT)

**SALE LOCATION:** Philip Livestock Auction • Philip, South Dakota

**SALE DAY PHONE:** (605) 859-2577 or register to bid online at: DVAuction  
*(must also register with sale barn -- www.philiplivestock.com)*

**AUCTIONEER:** Jeff Long • Enning, SD • (605) 515-0186

**SALE REPRESENTATIVES:** Don Ravellette • (605) 859-2516, *RPI Promotions*

Dan Piroutek • Milesville, SD • (605) 544-3316, *Tristate Livestock News*

Ryan Casteel • (605) 423-6000, *Cattle Business Weekly*

## TERMS & CONDITIONS

**TERMS:** Terms of the sale are cash or check payable to Philip Livestock Auction. All settlements must be made with the clerks of the sale before any cattle will be released.

**BIDS:** Every animal is to be sold and will be sold. No by-bidding is permitted. The highest bidder is the buyer.

**ABSENTEE BIDS:** If you cannot be with us on sale day, we will handle any bids in confidence. Please contact Cheyenne Charolais, the auctioneer, or any of the sale representatives.

**DISPUTES:** The auctioneer will have the right to settle any disputes that may arise and his decision in such matters is final.

**ANNOUNCEMENTS:** Errors discovered in the catalog will be corrected by announcements from the auction stand at sale time and such announcements will take precedence over printed material.

**REGISTRATION CERTIFICATES:** All bulls are registered or are eligible to be registered with the AICA and will be transferred upon request.

**BREEDER'S GUARANTEE:** Our customers' satisfaction with our cattle is important to us; please call if problems of any kind occur with your purchase. **BULLS ARE GUARANTEED FOR 1 FULL YEAR!**

**BREEDING GUARANTEE:** 100%. Should a bull fail to pass a semen test, full credit or a replacement will be issued.

**PERMANENT INJURY GUARANTEE:** Purchase price, minus salvage value, prorate usage fee 'til injury.

**DEATH GUARANTEE:** 50% credit or option of replacement bull. In event of injury or death, we offer free lease of a quality replacement bull for the remainder of the breeding season.

**HEALTH:** Bulls have received all shots and boosters for blackleg, foot rot and respiratory diseases and have been poured and wormed.

**VETERINARIAN:** Dr. Jim McConaghy, Golden Veterinary Services, Wall, SD • (605) 279-2077

**ACCIDENTS & LIABILITIES:** All persons attend the sale at their own risk and neither Cheyenne Charolais, nor Philip Livestock assumes any liability in case of accident or loss of property.

**MAIL BIDS:** Bidders unable to be present may send their bids and instructions to Cheyenne Charolais, the auctioneer, or any of the sale representatives. Phone bids will be accepted on sale day:

**(605) 859-2577.** Bidders may also pre-register to bid online at DVAUCTION!

**DELIVERY:** All bulls will be delivered free of charge after May 1.

**\*DISCOUNTS:** \$150 off per bull if you haul home sale day.

--- Volume discount 5% on 5, 6% on 6, 7% on 7, 8% on 8, 9% on 9, 10% on 10 or more.



Catalog produced by:

### RPI Promotions

Don Ravellette • (605) 685-5147

Beau Ravellette • (605) 685-8155

P.O. Box 788 • Philip, South Dakota 57567

www.rpipromotions.com



# Welcome to our 25th Annual Bull Sale!

It's with great pride that we present these bulls to great Cattlemen and Women on March 6th. This set of bulls has really impressed since last summer, with their ability to wean heavy off limited grass, eye-appeal, and just overall quality of the group.

The sire groups from the newer herd bulls are really coming into their own and the quality is definitely increasing. Calving ease has remained consistent while performance has gained substantially. Hopefully March 6th will be a nice day that will allow you to come see this set of bulls in person. I know you'll be impressed. If distance, weather, or calving keeps you from making the trip, please register with DV Auction and Philip Livestock before the sale. The easiest way to do this is to call the sale barn during business hours and someone will be happy to help you get set up. Also, any of the sale reps would be happy to help with absentee bidding.

I've always firmly believed in the power of crossbreeding. It seems like more than ever, the biggest calves in the Fall and the backgrounded calves over the Winter have been Charolais cross. They're not only bigger, but in the same weight ranges compared to black cattle, Charolais calves have also been the leaders in dollars per hundred weight. I just don't think you can go wrong putting Cheyenne Charolais bulls on any color of cow in any environment—they'll make you money!

Our producer of the year for 2018 will be Steve Thomas of Presho, SD. Steve has bought a ton of bulls out of the top end over the years and the high-seller on more than one occasion. He will receive a \$2000 credit at this or any future sale in recognition of this honor. Thanks to Steve as well as the previous honorees!!

Thank you to our many customers,  
and we hope to see you on Sale Day!!

***Sincerely,  
Joel & Kandi Deering  
& Kiddos***

*Special Note...*

*This past summer saw the passing of two long time customers and friends of Cheyenne Charolais. Chuck O'Connor and Bill Buls were two of the greatest men and cattlemen I've ever had the pleasure to know, and I will miss them.*



- \* Igenity genomic DNA profiles – Supplement Sale Day
  - Disposition scores
  - \* Reminders ---- \$150 off per bull if you haul home sale day.
  - Volume discount 5% on 5, 6% on 6, 7% on 7, 8% on 8, 9% on 9, 10% on 10 or more.
  - Bull Guarantee is for ANYTHING for one full year.
- Guarantees on guest consignments are handled by Cheyenne Charolais.

## **Past Producers of the Year:**

<b>2008</b>	Kieth Smith, Cottonwood
<b>2009</b>	Gary Snook, Midland
<b>2010</b>	Ross Williams, Philip
<b>2011</b>	Norval Millard, Presho
<b>2012</b>	Matt Brothers, Kenny & Stanley, Elm Springs
<b>2013</b>	Keith Reuer, Reliance
<b>2014</b>	Tim & Bob Peppel, St. Charles
<b>2015</b>	Chuck O'Connor, Philip
<b>2016</b>	Brady & Monte Schofield, Midland
<b>2017</b>	Grant Patterson, Kadoka

# REFERENCE SIREs

## **E A** 2H TLC COPPERHEAD 102Y PLD

Reg. EM803268 Calved: 2-18-2011 BW: 93  
Adj. WW: 726/100 Adj. YW: 1369/100 # Cont.: 1

[SCHURRTOP 5627] [WCR SIR DUKE 783  
LT WYOMING WIND 4020 PLD [MISS SUGAR VALLEY 908  
M411450 [LT CHAP'S LADY 2170P [LT UNLIMITED CHAPS 0109  
[LT PRAIRIE MAIDEN 8095  
[WCR PRIME CUT 764 PLD [JWK IMPRESSIVE D040 ET  
OBG ELVIRA 4303 PLD [WCR MISS EASE 4314  
F1013185 [BALDRIDGE ELVIRA 120M ET [VCR SIR DUKE 914 PLD  
[BALDRIDGE ELVIRA 62D

	CE	BW	WW	YW	Milk	MCE	MTL	SC
EPD	8.1	0.2	28	51	2	8.8	15	1.3
Acc	PE	PE	PE	PE	PE	PE	PE	PE
%RK	30	45	55	55	90	20	85	15

✓ Easy fleshing, thick, docile and EXCELLENT quality! Of the older herd bulls, I have a favorite & Copperhead is "it."



## **E B** OW MAXIMIZER 4021 PLD

Reg. M842032 Calved: 1-9-14  
BW: 65 ADJ. WW: 676

[FC MAGIC WIND 0105 P] [LT WYOMING WIND 4020 PLD  
DC-OW MAXIMIZER 385PLD [FUNKS MS HI MAGIC 704 P  
[DC MISS JOSEY 0215 PLD [SCV JOE MONTANA  
[PD MISS SENTINEL 5323PLD  
[OW DESIGN S519 [DA NEW DESIGN 104 P ET  
OW MISS DESIGN S519-2136 PLD [JWK MAVIS F209 ET  
[OW SPEEDWAGON K030  
[OW MISS SPEEDWAGON2027ET [GS DAISY 9017 PLD ET

	CE	BW	WW	YW	Milk	MCE	MTL	SC
EPD	10.0	-5.1	27	42	12	49	25	1.2
Acc	0.27	0.38	0.32	0.31	0.20	0.17	0.00	0.27
%RK	15	2	60	75	35	60	45	20

✓ Large sire group – we're just figuring out how great this bull can be! Consistently low to moderate BW with above average performance in his calves is hard to beat!

## **E C** WCR SIR DUKE 330 P

Reg. M833747 Calved: 2-12-13  
BW: 64 ADJ. WW: 835/117

[WCR OZ SIR DUKE 1155 PET] [VCR SIR DUKE 914 PLD  
WCR SIR DUKE 7340 P [VCR MISS MAC IV 902 PLD  
M745064 [WCR MISS TRADITION 6240P [WCR SIR TRADITION 3473  
[WCR MISS LO6 253 ET  
[WR-WCR POLLED PRINCE S602 [OAKDALE DUKE 9003P  
WCR MS PRINCE 1193 P [WR EASE 4412  
F1138629 [WCR MS PRIMECUT 558 P [WCR PRIME CUT 764 PLD  
[WCR MISS TRADITION 8310P

	CE	BW	WW	YW	Milk	MCE	MTL	SC
EPD	12.4	-4.7	36	54	12	4.9	30	1.0
Acc	0.28	0.38	0.32	0.32	0.20	0.17	0.00	PE
%RK	6	3	25	50	35	60	25	35

✓ From Wienk's in 2014. Tremendous birth to weaning spread! Light BW, but 330 is more of a performance bull! Some big, strong sons in the sale!

## **E D** CC BELVEDERE 411 PLD ET

Reg. EM845306 Calved: 2-24-14  
BW: 88 ADJ. WW: 747

[TR MR FIRE WATER 5792R ET] [THOMAS OAHE WIND 0772ET P  
TR PZC MR TURTON 0794 ET [THOMAS SWISSERSWEET1764ET  
[THOMAS MS IMPRESSIVE 0641 [JWK IMPRESSIVE D040 ET  
[BCI MISS VERYLIMIT 6033P  
[4-L UNLIMITED YL13 POLLED [BCR POLLED UNLIMITED 003  
JES MS HI YIELD K31 [HAW CHARISSA P465 POLLED  
[SCR SIR ADVANTAGE 9048  
[JES MS ADVANTAGE D411 [JES MS AVIGNON W210

	CE	BW	WW	YW	Milk	MCE	MTL	SC
EPD	7.4	-0.4	20	38	13	6.6	23	0.4
Acc	PE	PE	PE	PE	PE	PE	PE	PE
%RK	35	35	85	80	30	45	60	80

✓ Reserve Champion bull at S.D. State Fair and 2015 Black Hills Stock Show! Super thick and super disposition. He has a bright future! Some outstanding sons sell!

## **E E** WELLS LINE OF FIRE 1900

Reg. M806582 Calved: 3-12-11  
BW: 85 ADJ. WW: 759/94

[THOMAS OAHE WIND 0772ET P] [LT WYOMING WIND 4020 PLD  
TR MR FIRE WATER 5792RET [THOMAS MS CAMELOT 5646  
EM704588 [THOMAS SWISSERSWEET1764ET [LHD CIGAR E46  
[THOMAS MS BONANZA 8698  
[RVC 0259 [CUTTER BILL  
MS WELLS CUTTER BILL 238 [RVC MELISSA 1539  
F1000632 [MISS WELLS 630 [MCC MR SPURS 401 PLD  
[MISS WELLS 839

	CE	BW	WW	YW	Milk	MCE	MTL	SC
EPD	1.8	0.7	12	21	13	2.2	19	1.0
Acc	0.27	0.44	0.32	0.18	0.23	0.17	0.00	PE
%RK	80	55	95	95	30	85	75	35

✓ Member of Wells Reserve Champion Pen in Denver in 2012. Purchased from Reed Stranberg after he dispersed, this tremendous Firewater son is doing an outstanding job for us!

# REFERENCE SIREs

## EF PZC STETSON 5008 ET

Reg. EM865215 Calved: 1-16-15 BW: 90

[THOMAS OAHE WIND 0772ET P  
TR MR FIRE WATER 5792RET  
EM704588 [THOMASSWISSERSWEET1764ET  
[JWK IMPRESSIVE D040 ET  
THOMAS MS IMPRESSIVE0641  
F873178 [BCI MISS VERYLIMIT 6033P  
[LT WYOMING WIND 4020 PLD  
[THOMAS MS CAMELOT 5646  
[LHD CIGAR E46  
[THOMAS MS BONANZA 8698  
[WCR SIR FA MAC 2244  
[HBR LADY LIZ 721 P  
[SKYMONT P UNLIMITED 0115  
[BCR ROSE GIRL 0093

	CE	BW	WW	YW	Milk	MCE	MTL	SC
EPD	3.0	1.0	25	52	10	1.3	23	1.0
Acc	PE	PE	PE	PE	PE	PE	PE	PE
%RK	70	60	70	55	45	90	60	35

✓ 2016 Grand Champion BHSS. Only sire to two lots in the sale, but they're outstanding and we can't wait to see more!

## EG WCR SIR IMPRESSIVE 5171 P

Reg. M862676 Calved: 3-6-15 BW: 100 Adj WW: 758/104

[WCR SIR FA MAC 2244  
JWK IMPRESSIVE D040 ET  
M413653 [HBR LADY LIZ 721 P  
[CFL NO QUESTION 732  
WCR MS NO QUESTION 0187 P  
F1123843 [WCR MS PAUL 5355 P  
[WCR SIR FAB MAC 809  
[WCR MISS CENTURY 920 TWN  
[HBR IMPACT  
[HBR LADY MACK 459 P  
[EC NO DOUBT 2022 P  
[VJ MS POLAROID 3203 P/S  
[WCR SIR PAUL 9803 ET P  
[WCR MISS DUKE 625 P

	CE	BW	WW	YW	Milk	MCE	MTL	SC
EPD	3.6	2.4	34	62	12	3.1	29	0.2
Acc	0.27	0.39	0.33	0.33	0.23	0.20		PE
%RK	70	85	30	35	35	80	30	95

✓ Young bull from Wienk's; deep-bodied son of Impressive with great eye-appeal!

2TM  
Revelation 120,  
May 2016



## EH 2TM REVELATION 120

Reg. M813230 Calved: 10-3-2011  
BW: 84 Adj. WW: 781/100

[HOODOO SLASHER 1144  
D R REVELATION 467  
EM755482 [DR WC FOREVER LUCY 372ET  
[HOODOO CROOK 7118  
[MISS HOODOO Z6151  
[BALDRIDGE CADILLAC 74E  
[JD MS COMMANDER B309  
[PF IMPRESSED 620 P ET  
[VCR MISS DUCHESS 351 PLD  
[SKYMONT P UNLIMITED 0115  
[MISS THAIDA 9912  
[PF INFINITEJUSTICE1001PET  
2TM MS UNLIMITED1001-421 \*\*Dam of Distinction  
F999323 [BCI MISS LIMITED 6075PLD

	CE	BW	WW	YW	Milk	MCE	MTL	SC
EPD	2.8	-2.3	21	32	15	-1.0	26	0.8
Acc	0.29	0.47	0.38	0.22	0.21	0.16	0.00	PE
%RK	75	15	80	90	20	95	40	50

✓ BHSS 2013 Grand Champion bull. Active, athletic range bull that sires the same! Great eye-appeal and soundness!

## EI 2TM Unlimited Justice 818P

Reg. M759615 Calved: 3-5-2008 BW: 89  
Adj. WW: 728 Ratio: 106 # Cont.: 8

[PF IMPRESSED 620 P ET  
PF INFINITE JUSTICE 1001PET  
M613588 [VCR MISS DUCHESS 351 PLD  
[LHD CIGAR E46  
2TM MS CIGAR 228 PLD (\*)  
F954656 [BCI MISS LIMITED 6075PLD  
[JWK IMPRESSIVE D040 ET  
[MISS KC CROCUS 904 POLL  
[VCR SIR DUKE 914 PLD  
[VCR MISS MAC'SPERFECTION  
[LHD MR PERFECT Y416  
[LHD MS CLASSIC BELL X613  
[SKYMONT P UNLIMITED 0115  
[MISS THAIDA 9912

	CE	BW	WW	YW	Milk	MCE	MTL	SC
EPD	7.5	0.5	19	32	8	10.1	17	0.5
Acc	0.25	0.38	0.31	0.21	0.22	0.17	0.00	PE
%RK	35	50	85	90	60	9	80	75

✓ Purchased from Ted Morgan in 2009. Still active at 9 years old. Soundness & longevity!

## EJ JAB BULLET IN THE GUN 102 PLD ET

Reg. EM805269 Calved: 1-3-2011 BW: 90  
Adj. WW: 775 Ratio: 100 # Cont.: 1

[SCHURRTOP 5627  
LT WYOMING WIND 4020 PLD  
M411450 [LT CHAP'S LADY 2170P  
[LHD CIGAR E46  
SCC MS BUD 418-1128 ET  
F945574 [RC MS BUD 418 POLLED  
[WCR SIR DUKE 783  
[MISS SUGAR VALLEY 908  
[LT UNLIMITED CHAPS 0109  
[LT PRAIRIE MAIDEN 8095  
[LHD MR PERFECT Y416  
[LHD MS CLASSIC BELL X613  
[RC BUD 04 ET  
[MISS SHOWGUN RC 416

	CE	BW	WW	YW	Milk	MCE	MTL	SC
EPD	3.7	1.0	22	38	4	6.8	14	1.0
Acc	PE	PE	PE	PE	PE	PE	PE	PE
%RK	65	60	80	80	80	40	90	35

✓ BHSS 2012 GRAND CHAMPION CHAROLAIS BULL!  
Tremendous sire group – you will be impressed!

## EK WCR SIR MAC 447 ET P

Reg. EM848722 Calved: 2-16-14 BW: 74 Adj WW: 654/100

[FRISBIE MAC POLLED 257  
WCR SIR FAB MAC 809  
M202427 [MISS LW FA BINGO 229  
[BR DUKE 261  
WCR MS DUKE 530 P  
F1024228 [WCR MISS MAC 3287 P  
[FZ MAC 236 POLLED  
[ROXIE POLLED  
[BELPHEGOR  
[MISS LW FACCO 7010  
[BR DUKE 295  
[BR ANN 14  
[WCR SIR MAC 9920 ETP  
[WCR MISS PLAYWRIGHT 8266

	CE	BW	WW	YW	Milk	MCE	MTL	SC
EPD	0.2	-0.8	22	34	8	-4.0	19	0.4
Acc	PE	PE	PE	PE	PE	PE	PE	PE
%RK	85	30	80	85	60	100	75	80

✓ I like the moderate BW's, eye-appeal and growth sired by this guy! Some really nice sons in the sale!



# DISPOSITION SCORE

We are including this on every lot - disposition is a big priority and these scores are my own assessment from feeding by hand twice a day and working these bulls several times. Disposition also included in the guarantee!

- Scores 1 - Nuts  
 2 - Wild and/or Mean/High-Headed  
 3 - Average; Normally mild but could act up potentially in the chute or if handled rough  
 4 - Above Average  
 5 - Excellent; has never shown at any time, anything but "Happy Bull" behavior  
 5+ Pet! Might need a stick to get him out of the way, likes to get a scratch now and then!

**Definitely no "1" or "2"s in the sale!**

## YEARLING BULLS

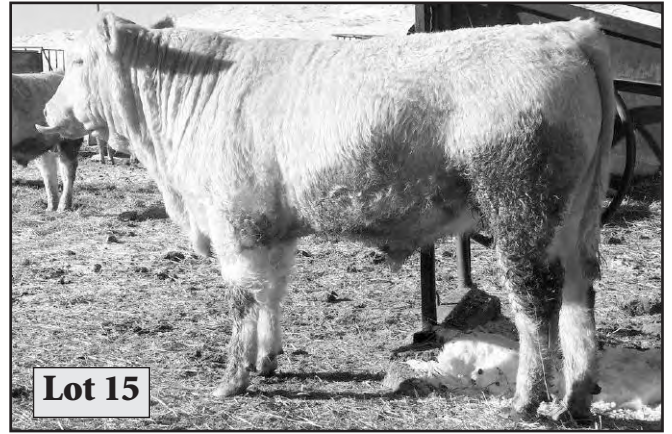
Lot	ID	Sire P/S/D Dam/Sire of Dam	BD	BW EPD	Act. WW 10-15-17	Adj. WW/Ratio EPD	ADG	Adj. YW EPD
1	704	[Copperhead P [9W/Pastor Bill]	2-22-17	92 0.7	910	805/124 34	3.29	1331/111 51
*Incredible WW, super disposition - this is a great calf!								Disp: 5
2	721	[PZC Stetson P [127/Cigar 630]	2-28-17	96 1.4	785	713/110 30	4.37	1412/118 60
*One of the best we've ever raised! Anyone who sees him will want to own him!								Disp: 5
3	7730	[Copperhead P/S [113/Justice 503]	3-4-17	98 1.3	855	784/121 33	4.04	1430/119 55
*Big, growthy calf with herd-bull quality by the great Copperhead!								Disp: 5
4	7100	[CC Belvedere P [8-21B/Justice 503]	3-16-17	92 0.6	785	759/124 27	5.19	1485/124 48
*Big, long, incredibly good calf with tons of gain and disposition!								Disp: 5+
5	757	[Maximizer 4044 P [754/Justice 503]	3-10-17	92 -0.3	785	741/114 28	3.87	1361/113 43
*Performance plus in this great calf and what a hair coat!								Disp: 5
6	736	[Wells Line Of Fire P [131/Justice 503]	3-5-17	90 1.0	780	726/112 31	4.00	1366/114 40
*These Line of Fire/Justice cross bulls are pretty special - check them out!								Disp: 5
7	771	[Maximizer 4044 P [740/Big Wind]	3-12-17	76 -2.3	740	704/108 25	3.67	1291/108 35
*Calving ease bred, with plenty of performance too! Great calf with great hair!								Disp: 5
8	733	[Wells Line Of Fire P [9156/Justice 504]	3-4-17	93 1.3	760	701/108 26	4.21	1374/115 39
*Big ol' boy that's nearly identical to Lot 6!								Disp: 5
9	760	[Wells Line Of Fire P [760/Triple Ease]	3-9-17	92 0.9	760	741/114 27	3.21	1254/105 32
*760# WW off the cow, ID #760, by cow #760. What are the odds? Great calf!								Disp: 5
10	745	[CC Belvedere P [R14/JES Corona]	3-7-17	86 -0.2	770	722/111 26	3.79	1328/111 41
*Excellent calf with thickness and performance!								Disp: 5
11	7118	[WCR Sire Duke 330 P [9/92W/Big Wind]	3-17-17	92 0.3	765	777/119 35	4.04	1423/119 59
*Eye-appealing calf with all the performance you'll ever need!								Disp: 5
12	7180	[Maximizer 4044 D [426/SCR Dominion]	3-24-17	86 -1.9	655	683/105 27	3.81	1292/105 35
*This is a thick, classic looking calf out of a grand old 73 Ranch bred cow!								Disp: 5
13	7156	[Maximizer 4044 P [8140/Justice 504]	3-21-17	88 -0.8	710	698/107 28	3.88	1318/110 40
*One of my favorites! Super hip and thickness!								Disp: 5

# YEARLING BULLS





# YEARLING BULLS



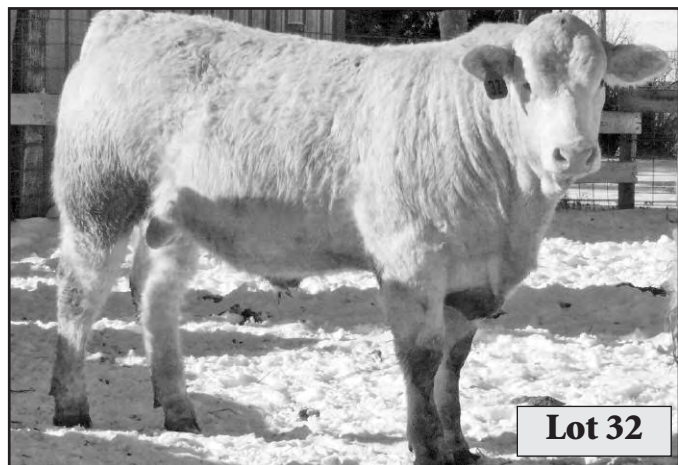


# YEARLING BULLS

Lot	ID	Sire	BD	BW	Adj. WW/Ratio	ADG	Adj. YW
	P/S/D	Dam/Sire of Dam		EPD	EPD		EPD
14	7148	[WCR Sir Duke 330 [2B12/Wind 016	3-19-17	84 -1.6	730	746/114 36	4.00 1370/111 51
<i>*Great looking calf with a calving ease and performance pedigree!</i>							<b>Disp: 5</b>
15	7209	[WCR Sir Impressive [122/Cigar 406	3-28-17	89 1.7	735	743/114 34	3.71 1336/111 56
<i>*Nice, thick calf with a slight red factor.</i>							<b>Disp: 5</b>
16	7157	[WCR Sire Impressive [3176/Copperhead	3-21-17	87 1.6	706	694/108 32	4.03 1339/112 58
<i>*Thick, massive calf that should catch your eye!</i>							<b>Disp: 5</b>
17	7306	[WCR Sire Impressive [2/44G/Justice 818	4-11-17	94 2.0	655	706/109 31	4.12 1366/114 59
<i>*These Sir Impressive calves are pretty darn good! Check this quiet calf out!</i>							<b>Disp: 5</b>
18	7111	[CC Belvedere [2B46/Wind 016	3-16-17	81 -1.2	660	638/98 22	4.33 1331/111 41
<i>*Big, high-gaining calf with disposition plus!</i>							<b>Disp: 5+</b>
19	719	[Copperhead [701/Big Wind	2-27-17	85 -0.3	735	694/107 26	4.04 1340/112 43
<i>*Another Copperhead that's thick, eye-appealing and really good!</i>							<b>Disp: 5</b>
20	713	[Copperhead [RF88/Justice 503	2-26-17	88 0.1	810	729/112 34	4.25 1409/117 55
<i>*Super performance in this big, quiet 7/8 calf! 1/8 Red Angus.</i>							<b>Disp: 5</b>
21	7273	[Maximizer 4044 [627/Norbert	4-5-17	86 -2.0	610	669/103 24	4.16 1335/108 39
<i>*Loads of eye-appeal and gain in this calving-ease bred calf!</i>							<b>Disp: 5</b>
22	7221	[Revelation 120 [170/Cigar 406	3-30-17	90 -0.5	690	705/108 23	3.41 1251/104 30
<i>*Won't find a better looking calf in the sale! He's always stood out to me!</i>							<b>Disp: 5</b>
23	7448	[Maximizer 4044 [477/Bullet	3-18-17	90 -0.2	725	679/104 25	4.25 1359/113 43
<i>*Nice, thick calf with excellent gain!</i>							<b>Disp: 5</b>
24	7105	[Wind 016 [137/Triple Ease	3-16-17	90 1.3	735	710/109 28	4.29 1397/116 44
<i>*Old "Theodore" really sired a dandy here! This calf really doesn't have a flaw!</i>							<b>Disp: 5+</b>
25	722	[Maximizer 4044 [573/Pastor Bill	2-28-17	86 -1.7	745	716/110 29	3.20 1228/102 39
<i>*Good calf with an easy-calving pedigree and a nice pattern. Long and quiet!</i>							<b>Disp: 5</b>
26	7352	[WCR Sir Duke 479 [686/Cigar 406	5-10-17	78 1.0	525	689/106 31	3.67 1276/106 48
<i>*Out of a son of Duke 261, this young calf performed well!</i>							<b>Disp: 5</b>
27	798	[JAB Bullet In The Gun [8-55B/Navigator 503		75 0.2	670	648/100 23	4.21 1321/110 33
<i>*Light birth weight with great performance! Hard to beat,, this is a good one!</i>							<b>Disp: 5</b>
28	7301	[Maximizer 4044 [8-77B/Cigar 406	4-11-17	95 0.8	625	673/104 26	4.08 1326/111 43
<i>*Lots of these 4044 sons and they're all Good! Nice young calf!</i>							<b>Disp: 5</b>
29	759	[Maximizer 4044 [111/Justice 818	3-11-17	89 -2.0	710	673/104 26	3.12 1173/98 34
<i>*One of the most eye-appealing calves in the sale!</i>							<b>Disp: 5</b>
30	743	[Maximizer 4044 [155/Justice 818	3-16-17	83 -2.3	700	651/100 22	3.58 1224/102 38
<i>*Long, docile 4044 son that I really like a lot!</i>							<b>Disp: 5</b>

# YEARLING BULLS

Lot	ID P/S/D	Sire Dam/Sire of Dam	BD	BW EPD	Adj. WW/Ratio EPD	ADG	Adj. YW EPD
31	716 P	[WCR Sir Wyoming Wind [R116/Triple Ease	2-26-17	69 -1.4	710 23	638/98 23	3.50 1198/100 34
<i>*Good calf with a light birth weight, from a new Wienk herd bull we really like! 1/4 Red Angus.</i>							<b>Disp: 5</b>
32	7132 P	[Maximizer 4044 [8109/Justice 503	3-18-17	86 -2.4	760 30	741/114 30	3.83 1354/113 45
<i>*One of the best calves in the sale, handle with care and you'll get along fine.</i>							<b>Disp: 3</b>
33	712 D	[Wells Line Of Fire [9G29/Triple Ease	2-25-17	90 1.4	730 22	655/101 22	3.58 1228/102 32
<i>*Big, long friendly calf that I think you'll like!</i>							<b>Disp: 5+</b>
34	7182 P	[Maximizer 4044 [540/Norbert	3-24-17	85 -2.4	660 24	692/106 24	4.25 1372/114 40
<i>*Medium frame, thick calf that gained super well!</i>							<b>Disp: 5</b>
35	706 P	[Copperhead [0-46/Alicia's Cigar	2-23-17	88 0.4	675 23	602/93 23	4.38 1302/109 44
<i>*Big, stretchy calf that has a tremendous ADG!</i>							<b>Disp: 5+</b>
36	7112 P	[WCR Sir Mac 447 [8-60B/Justice 503	3-16-17	82 -0.8	700 23	677/104 23	4.33 1370/114 37
<i>*This grandson of Mac 809 is well-made and has a light birth weight and super gain!</i>							<b>Disp: 5</b>
37	790 P	[Wells Line Of Fire [108/Triple Ease	3-13-17	81 0.4	735 28	702/108 28	3.96 1335/111 38
<i>*Nicely made, top end bull with a light birth weight and great performance. Temperament could be better.</i>							<b>Disp: 3</b>
38	7254 P	[WCR Sir Impressive [333/Copperhead	4-4-17	87 1.7	650 34	680/105 34	4.08 1333/111 53
<i>*Good young calf that I like for his thickness and growth!</i>							<b>Disp: 5</b>
39	7217 P	[WCR Sir Impressive [0116/Justice 504	3-29-17	87 1.5	660 32	671/103 32	3.88 1291/108 46
<i>*I love the way this guy is put together! Nice calf!</i>							<b>Disp: 5</b>
40	7170 P	[WCR Sir Duke 330 [R25/Cigar 406	3-23-17	90 0.4	630 31	625/96 31	4.50 1345/112 53
<i>*1/8 Red Angus. Lots to like in this guy! Great gain, eye-appeal and disposition!</i>							<b>Disp: 5</b>
41	7252 P	[WCR Sir Impressive [2G44/Justice 818	4-4-17	85 1.2	685 37	716/110 37	3.79 1322/110 56
<i>*Powerful calf that looks great from all angles!</i>							<b>Disp: 5</b>
42	7232 P	[WCR Sir Duke 330 [RF119/Alicia's Cigar	4-1-17	93 1.8	735 41	757/116 41	4.54 1483/124 59
<i>*1/4 Red Angus. No shortage of performance in this big, yellow guy!</i>							<b>Disp: 4</b>



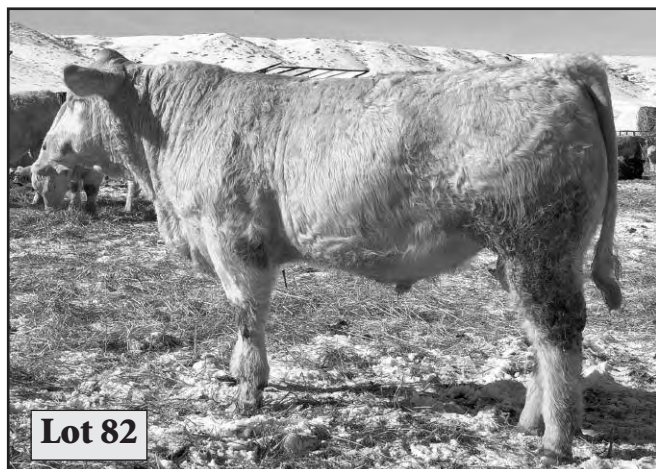
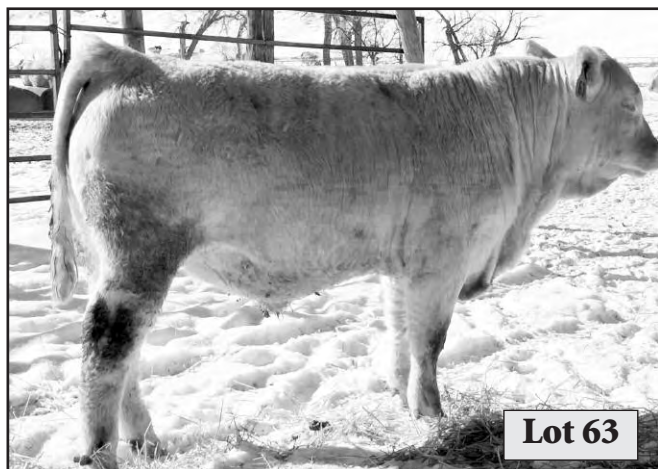


# YEARLING BULLS

Lot	ID	Sire	BD	BW	Act. WW	Adj. WW/Ratio	ADG	Adj. YW
	P/S/D	Dam/Sire of Dam		EPD	10-15-17	EPD		EPD
43	7285	[Revelation 120 D [161B/Cigar 406]	4-8-17	89 0.3	640	680/105 23	3.75	1280/107 35
<i>*1/8 Angus. Big, quiet calf with thickness and style!</i>								<b>Disp: 5</b>
44	7194	[CC Belvedere D [156/Justice 504]	3-26-17	94 1.4	675	678/104 24	3.83	1291/108 36
<i>*Awesome calf! I love his look, thickness and disposition!</i>								<b>Disp: 5</b>
45	796	[Maximizer 4044 D [7116/Corona]	3-15-17	85 -1.9	650	656/101 23	3.54	1223/102 34
<i>*Nice calf! He has some thickness to him, great hair and moderate birth weight!</i>								<b>Disp: 5</b>
46	7329	[WCR Sir Mac 447 P [4282/Revelation 120]	4-19-17	82	615	689/106 24	3.54	1256/105 33
<i>*Calving ease here with some style as well!</i>								<b>Disp: 5</b>
47	7272	[JAB Bullet In The Gun P [4271/Revelation 120]	4-5-17	80 0.2	580	638/98 21	3.92	1265/105 34
<i>*Young, smooth-made Bullet son that I think you'll like!</i>								<b>Disp: 5</b>
48	7346	[Copperhead P [7760/Triple Ease]	4-30-17	93 1.3	595	732/112 34	3.92	1359/113 53
<i>*Nice Copperhead that a little behind in age, not quality! Super calf!</i>								<b>Disp: 5</b>
49	7155	[WDZ Wind 016 P [9216/Justice 504]	3-21-17	91 1.5	660	649/100 20	3.67	1236/103 31
<i>*Good calf, has a nice look to him, solid performance!</i>								<b>Disp: 5</b>
50	7158	[JAB Roller Coaster P [4458/Bullet]	3-21-17	79 -0.8	610	630/97 24	4.08	1283/107 40
<i>*Lighter birth weight Bluegrass grandson with a great gain!</i>								<b>Disp: 5</b>
51	7163	[WCR Sir Mac 447 D [328/Maximizer X89]	3-22-17	86 -0.5	600	603/93 19	4.08	1256/105 28
<i>*Calving ease bred on both sides! 1/4 Hereford.</i>								<b>Disp: 5</b>
52	7261	[JAB Bullet In The Gun P [4485/Bullet]	4-5-17	82 0.1	585	643/99 23	4.29	1330/111 42
<i>*This young calf has thickness, depth and an exceptional gain! Linebred Bullet</i>								<b>Disp: 5</b>
53	729	[WCR Sir Duke 330 P [8B11/Justice 504]	3-3-17	84 1.3	670	616/94 30	4.33	1309/109 46
<i>*One of my favorites all year! If you like thickness and moderate frame, you'll like him too!</i>								<b>Disp: 5</b>
54	7210	[WCR Sir Mac 447 P [B190/Justice 503]	3-28-17	83 -0.4	635	643/99 20	2.87	1103/92 29
<i>*1/4 Angus. If a black-nosed bull could fit your program, calving and style here!</i>								<b>Disp: 4</b>
55	734	[WCR Sir Duke 330 P [674/Infinite Wind]	3-4-17	82 -2.8	660	609/92 27	3.83	1222/102 41
<i>*Calving ease bred in a pretty nice package!</i>								<b>Disp: 5</b>
56	742	[PZC Stetson P [615/Norbert]	3-6-17	94 1.5	635	621/96 24	4.25	1301/108 44
<i>*Out of the same sire as Lot 2. I love this calf - thick, quiet and extra nice!</i>								<b>Disp: 5+</b>
57	7192	[CC Belvedere P [RF 132/Justice 818]	3-25-17	77 0.6	610	610/94 22	3.50	1170/98 30
<i>*Twin calf with tons of thickness and eye-appeal! 1/8 Red Angus.</i>								<b>Disp: 5</b>
58	7321	[Bullet P [102/Cigar 630]	4-15-17	91 1.6	640	703/108 27	4.00	1343/112 43
<i>*1/8 Angus. Dark-nosed calf with great performance!</i>								<b>Disp: 5</b>
59	794	[MC LM All In 223 P [4475/Maximizer X89]	3-14-17	80 -1.7	610	615/95 28	3.83	1228/102 40
<i>*1/4 Angus. Light birth weight calf by All In. Very thick and eye-appealing!</i>								<b>Disp: 5</b>

# YEARLING BULLS

Lot	ID	Sire P/S/D Dam/Sire of Dam	BD	BW EPD	Act. WW 10-15-17	Adj. WW/Ratio EPD	ADG	Adj. YW EPD
60	725	[Maximizer 4044 P [907/Big Wind	3-1-17	72 -3.2	630	573/88 18	3.38	1113/93 29
<i>*Light birth weight calf that's been coming along nicely.</i>								Disp: 5
61	782	[WCR Sir Wyoming Wind P [4G71/Maximizer X89	3-13-17	84 -0.4	655	627-96 21	3.75	1227/102 38
<i>*Moderate birth weight, thick and good-looking calf!</i>								Disp: 5
62	7195	[Revelation 120 D [2R63/Justice 503	3-26-17	98 2.6	610	613/94 20	4.00	1253/104 36
<i>*This long-legged fellow is going to get BIG!</i>								Disp: 5
63	7256	[Maximizer 4044 P [4108/Wind 016	4-4-17	84 -2.9	570	625/96 22	3.79	1232/103 34
<i>*Smaller in stature, but big on thickness and style!</i>								Disp: 5
64	7218	[JAB Roller Coaster P [2G43/Wind 016	3-29-17	87 -1.7	510	519/80 21	3.29	1046/87 29
<i>*Lighter birth weight calf that is very well-made!</i>								Disp: 5
65	715	[WCR Sir Impressive P [181/Cigar 406	2-26-17	55 1.1	580	520/80 25	2.58	933/88 38
<i>*Twin calf, not raised by cow. He could use more groceries!</i>								Disp: 5
66	7280	[WDZ Wind 016 P [0117/Navigator 503	4-7-17	83 1.3	540	571/96 20	3.91	1198/100 30
<i>*Light birth weight, smaller calf that's not lacking for thickness and eye-appeal!</i>								Disp: 5
67	7151	[Maximizer 4021 P [4495/Maximizer X89	3-21-17	71 -4.1	570	590/98 21	3.29	1117/93 28
<i>*This is probably the best heifer bull prospect amongst the calves! Fine boned and good!</i>								Disp: 5
68	7275	[JUSTICE 818P P [142/Triple Ease	4-5-17	104 3.5	580	607/93 20	4.21	1280/107 38
<i>*Long, tall rascal that's going to be a big boy when he grows up! Exceptional gain!</i>								Disp: 4
69	7341	[MAXIMIZER 4044 P [2R58/Justice 504	4-27-17	80 -2.9	500	581/89 22	4.04	1228/102 40
<i>*I wouldn't be scared of this guy for heifers or three year olds! Nice calf, great gain!</i>								Disp: 5
70	7153	[JUSTICE 818P P [115/Justice 504	3-21-17	93 0.9	585	576/89 19	2.83	1029/86 25
<i>*This calf hurt his foot and has recovered, but slowed down his gain!</i>								Disp: 5
71	739	[CC BELVEDERE P [789/Triple Ease	3-6-17	76 -1.0	640	595/92 21	3.58	1168/97 32
<i>*Light birth weight, excellent thickness and eye-appeal!</i>								Disp: 5





# YEARLING BULLS

Lot	ID	Sire	BD	BW	Act. WW	Adj. WW/Ratio	ADG	Adj. YW
	P/S/D	Dam/Sire of Dam		EPD	10-15-17	EPD		EPD
72	7211	[JAB ROLLER COASTER P [4267/Wind 016]	3-28-17	77 -0.7	580	588/91 24	3.75	1188/99 39
<i>*Stylish calf with a light birth weight! We used his sire on coming threes with confidence!</i>								<b>Disp: 4</b>
73	756	[JAB BULLET IN THE GUN3-9-17 P [731/Corona]		83 0.4	540	508/78 17	4.08	1161/97 27
<i>*This calf was on a poor milking cow. He really gained well post weaning!</i>								<b>Disp: 5</b>
74	7179	[REVELATION 120 P [8107/Big Wind]	3-24-17	84 -1.5	590	588/90 19	3.58	1161/97 25
<i>*Nice patterned calf will work well for younger cows!</i>								<b>Disp: 5</b>
75	7213	[MAXIMIZER 4021 P [4296/Bullet]	3-29-17	73 -2.9	550	589/91 23	3.42	1136/95 30
<i>*Smaller framed calf that may be a heifer bull prospect!</i>								<b>Disp: 5</b>
76	7234	[REVELATION 120 D [143/Justice 504]	4-1-17	76 -2.3	650	670/103 26	2.92	1137/95 31
<i>*Young calf that combined a low birth weight with a good weaning weight.</i>								<b>Disp: 5</b>
77	758	[WELLS LINE OF FIRE D [1/52R/Justice 818]	3-11-17	87 1.3	735	697/107 27	3.50	1257/105 35
<i>*Powerful performance bull from the great Line of Fire bull! Big, gentle fellow!</i>								<b>Disp: 5</b>
78	708	[COPPERHEAD P [2R23/Cigar 630]	2-25-17	91 1.6	680	611/94 27	3.67	1198/100 40
<i>*This big, quiet calf is a good one!</i>								<b>Disp: 5</b>
79	7178	[MAXIMIZER 4044 P [880/Justice 503]	3-24-17	89 -1.6	650	648/100 22	3.54	1215/101 37
<i>*Just a really good, long, super smooth calf!</i>								<b>Disp: 4</b>
80	7340	[WCR SIR MAC 447 P [4107/Revelation 120]	4-24-17	69 -1.7	525	633/97 20	3.13	1133/94 30
<i>*Nice young calf that really has the calving ease "look"!</i>								<b>Disp: 5</b>
81	7116	[WCR SIR DUKE 479 P [2B83/Wind 016]	3-17-17	88 1.8	635	616/95 27	3.96	1249/104 44
<i>*Grandson of Duke 261 that I like for his length and disposition.</i>								<b>Disp: 5</b>
82	784	[MAXIMIZER 4044 P [8103/Justice 503]	3-13-17	89 -0.2	675	645/99 24	4.33	1338/112 42
<i>*This guy! You won't miss him - one of the coolest looking bulls in the sale!</i>								<b>Disp: 5</b>
83	755	[MAXIMIZER 4044 P [2R35/Justice 504]	3-9-17	92 0.8	675	635/98 22	4.21	1308/109 40
<i>*This calf has turned into quite the brute! Tons of growth here!</i>								<b>Disp: 5+</b>
84	791	[JAB ROLLER COASTER P [4170/Revelation 120]	3-13-17	83 0.5	530	537/83 24	4.16	1204/100 39
<i>*A little light on weaning weight (his mom broke a foot), but super good and a great gain!</i>								<b>Disp: 5+</b>
85	797	[WCR SIR DUKE 330 P [0-37/Cigar 630]	3-15-17	88 -0.1	740	713/110 38	4.21	1386/116 58
<i>*Deep-sided, thick bull with great performance!</i>								<b>Disp: 5</b>
86	7115	[JAB BULLET IN THE GUN3-17-17 P [4497/Maximizer X89]		76 -0.6	575	588/90 20	3.54	1155/96 35
<i>*Dark-nosed 3/4 bull that will work well for young cows! 1/8 Angus.</i>								<b>Disp: 5</b>
87	714	[WCR SIR DUKE 330 P [318/Copperhead]	2-26-17	83 -1.5	640	587/90 30	4.08	1240/103 47
<i>*Smooth-made, eye-appealing, good-gaining calf!</i>								<b>Disp: 5</b>
88	7288	[WDZ MONTEZUMA P [182/Justice 818]	4-8-17	96 2.9	630	669/103 26	4.33	1362/114 49
<i>*Young calf with frame and growth! Sometimes a little touchy, mostly no problem.</i>								<b>Disp: 3.5</b>

# TWO-YEAR-OLD BULLS

*I'm pretty proud of this group this year and how they've developed. There is a little difference in condition between the bulls that were used and those that were not, so please take that into consideration when you evaluate these guys.*

*Lots 92, 93 & 96 are from the Bill Bulls Estate. His son, Ben, asked if I would develop them for this year's sale. These three are all darn good, and I'm proud to say they were bred to the highest-selling bred cows I saw listed all fall at Philip Livestock.*

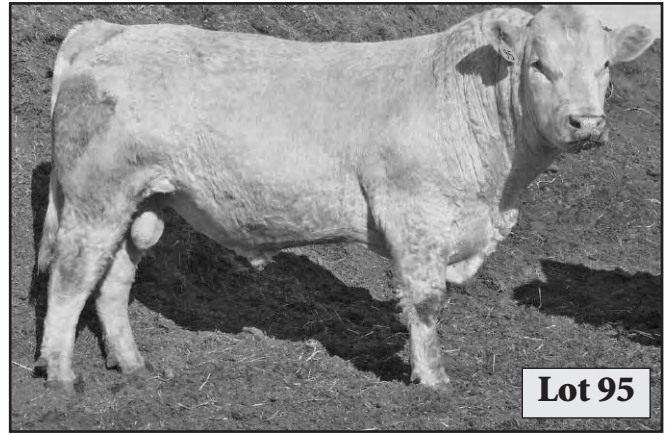
*We've hand-fed these bulls all winter; they're not fat and are sure ready to turn out to pasture with your range bulls. Like the yearlings, we will take them home 'til May, but it would sure be nice if a few got to go to their new homes sale day.*

*Thanks for checking them out and I'm sure you'll be happy with what you see!*

\*All bulls trich-tested & semen evaluated.



**Lot 91**



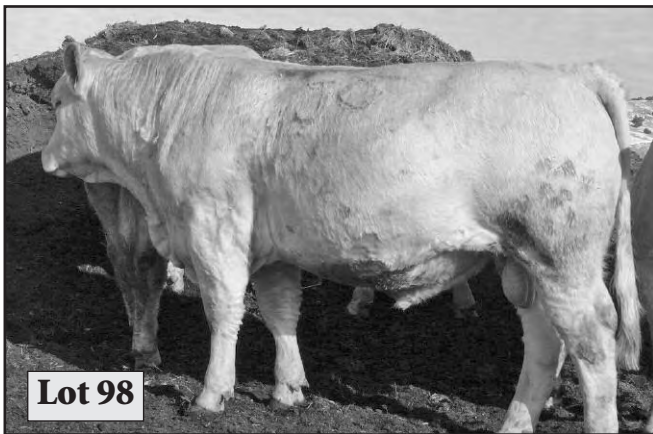
**Lot 95**



**Lot 96**



**Lot 100**

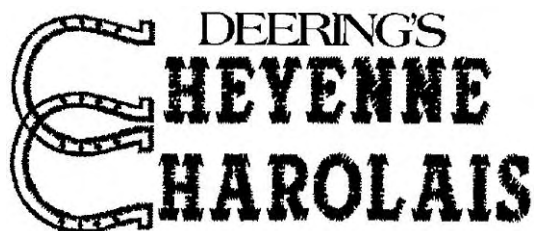


**Lot 98**



# TWO-YEAR-OLD BULLS

Lot	ID P/S/D	Sire Dam/Sire of Dam	BD	BW EPD	Adj. WW/Ratio EPD	2018 ADG	Act. Wt. 2-15-18	YW EPD
89	6Q8 P	[REVELATION 120 [6121/Corona	6-19-16	89 -0.4	670 20	3.74	1600	30
<i>*Big ol' summer calf in his working clothes, ready to go! Virgin bull. Trich tested.</i>								
90	T611 P	[MAXIMIZER X89 [21/Maximizer X89	3-21-16	74 -3.0	551 32	3.42	1335	38
<i>*About as sure-shot heifer bull prospect as there is! Non-virgin bull. Trich tested.</i>								
91	6161 D	[REVELATION 120 [2R54/Justice 504	3-24-16	89 -0.1	635 21	4.39	1760	34
<i>*Big, long and powerful! Kept this calf as an extra last year, but was never turned out. Virgin bull. Trich tested</i>								
92	6322 P	[CC ZANE [737/Triple Ease	4-21-16	93 1.8	665 27	4.12	1585	38
<i>*Bill Bulls Estate consignment. This is an ideal range bull - long, travels well and eye-appealing. Non-virgin. Trich tested.</i>								
93	6171 P	[REVELATION 120 [2R14/WDZ Wind	3-25-16	82 -2.4	591 22	4.16	1590	35
<i>*Bill Bulls Estate consignment. Long, thick, docile bull that also gained 4.73 as a calf! Non-virgin. Trich tested.</i>								
94	6I6 P	[REVELATION 120 [752/Justice 504	6-5-16	86 0.2	655 23	3.92	1490	31
<i>*Nice young summer 2! Used to replace a bull last year, super nice calf to be around! Non-virgin. Trich tested.</i>								
95	680 P (Twin)	[SRSC OLAF [RF14/Corona	3-14-16	78 -0.1	652 30	4.26	1730	49
<i>*One of the better calves last year, he was held up to see if his attitude would improve - and it did! Thick, deep-bodied, excellent bull! Virgin bull. Trich tested. 1/8 Red Angus.</i>								
96	671 P	[CC MR BELVEDERE [754/Justice 503	3-13-16	94 0.9	645 25	4.33	1605	41
<i>*Bill Bulls Estate consignment. One of my favorites last year! Outstanding bull! Non-virgin. Trich tested.</i>								
97	6113 P	[MAXIMIZER X89 [305/Justice 818	3-18-16	87 -1.4	595 31	3.60	1555	40
<i>*Long, smooth bull that was kept for a replacement, but not needed. Calving-ease pedigree, ready to go! Virgin bull. Trich tested.</i>								
98	6151 P	[SIR DUKE 330P [2B51/Justice 818	3-22-16	99 1.2	631 34	4.11	1750	50
<i>*Bull we kept for a replacement last year. Big, powerful individual that really grew up to be a beautiful bull. I really like this big fella! Virgin bull. Trich tested.</i>								
99	6I5 P	[REVELATION 120 [539/Navigator 505	6-17-16	90 0.6	669 25	3.52	1400	30
<i>*Really nice, quiet bull with length and thickness. This summer bull wasn't intended to be used, but got out with cows late summer. Non-virgin. Trich tested.</i>								
100	6328 P	[JUSTICE 818 [721/Triple Ease		94 1.6	638 22	4.02	1740	31
<i>*This bull has really grown out well and is probably my favorite of this group! Replacement, not used.</i>								



Thanks for your interest  
in our program!